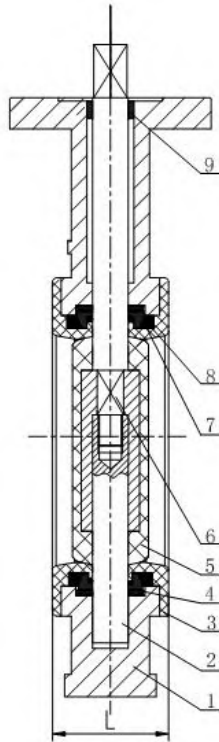
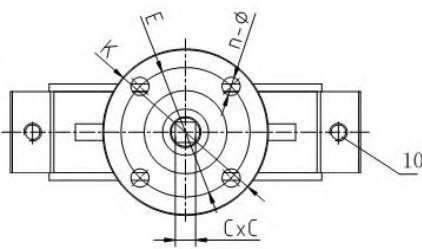


Technical Specification

Design: API609
 Inspection & Test: API 598
 Face to Face: API 609
 Flanges: EN 1092-2 PN10/16/JIS 10K/150LB
 Hydraulic test to ISO 5208
 Seat Test Pressure: 11bar, 17.6 bar
 Shell Test Pressure: 15bar, 24 bar
 Operating Torque Test

Materials Specification

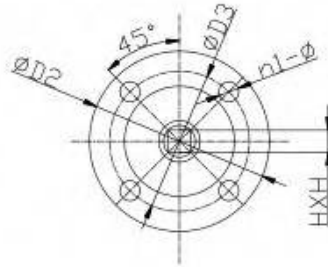
No.	Name	Material
1	Body	Cl/DI/CF8/CF8M
2	Lower shaft	SS410/420/431
3	Seat /liner	PTFE /PFA
4	Butterfly spring	Spring steel
5	Disc	CF3M/CF8M+PTFE
6	Upper shaft	SS304 /316 /410
7	Seat energizer	Silicone
8	Pressing Sleeve	Stainless steel
9	Bushing	PTFE /PFA
10	Bolt	SS304 /316



Main Dimensions

Size	D1 150LB	D1 PN6	D1 PN10	D1 PN16	D1 10K	L	A	B	CXC	W	ISO 5211	K	E	n-Ø
2"	120.7	110	125	125	120	43	140	75	9x9	14	F07	90	70	4-10
2.5"	139.7	130	145	145	140	46	150	82	9x9	14	F07	90	70	4-10
3"	152.4	150	160	160	150	46	160	90	9x9	14	F07	90	70	4-10
4"	190.5	170	180	180	175	52	178	118	11x11	14	F07	90	70	4-10
5"	215.9	200	210	210	210	56	190	131	14x14	17	F07	90	70	4-10
6"	241.3	225	240	240	240	56	200	145	14x14	17	F07	90	70	4-10
8"	298.5	280	295	295	290	60	240	173	17x17	22	F10	125	102	4-12
10"	362	335	350	355	355	68	273	208	22X22	22	F10	125	102	4-12
12"	431.8	395	400	410	400	78	310	244	22X22	22	F10	125	102	4-12

Other sizes to be provided as per requirements.



Technical Specification

Design standard: EN593

Testing standard: EN12266-1

Face to Face: EN558-1

Flanges: EN 1092-2 PN10/16/JIS 10K/150LB

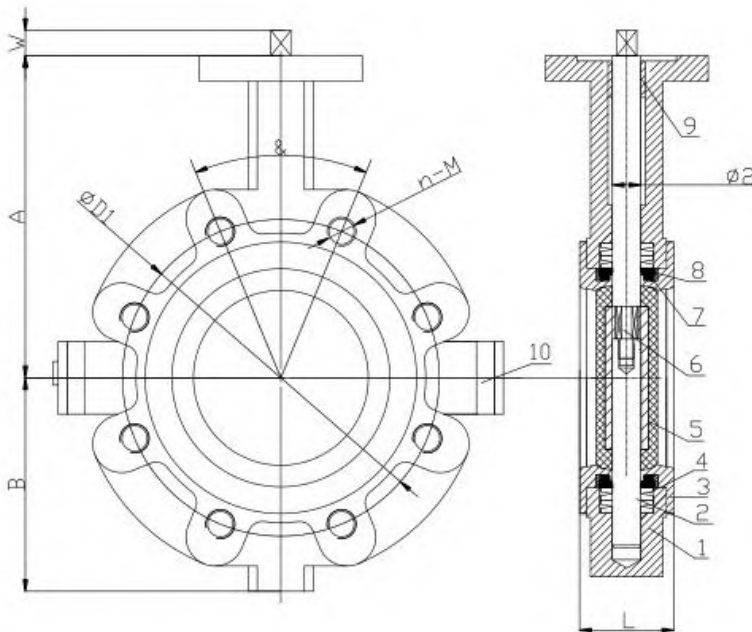
Hydraulic test to ISO 5208

Seat Test Pressure: 11bar, 17.6 bar

Shell Test Pressure: 15bar, 24 bar

Operating Torque Test

Materials Specification



No.	Name	Material
1	Body	CI/DI/CF8/CF8M
2	Lower shaft	SS410/420/431
3	Seat /liner	PTFE /PFA
4	Butterfly spring	Spring steel
5	Disc	CF3M/CF8M+PTFE
6	Upper shaft	SS304 /316 /410
7	Seat energizer	Silicone
8	Pressing Sleeve	Stainless steel
9	Bushing	PTFE /PFA
10	Bolt	SS304 /316

Main Dimensions

SIZE	A	B	$\varnothing 2$	L	HXH	ISO5211	D2	D3	n1- \varnothing C	W	D1	n-M	&
DN50	140	75	12.6	43	9x9	F07	90	70	4-10	14	125	4-M16	90
DN65	150	82	12.6	46	9x9	F07	90	70	4-10	14	145	4-M16	90
DN80	160	90	12.6	46	9x9	F07	90	70	4-10	14	160	8-M16	45
DN100	178	118	15.77	52	11x11	F07	90	70	4-10	14	180	8-M16	45
DN125	190	131	18.92	56	14x14	F07	90	70	4-10	17	210	8-M16	45
DN150	200	145	18.92	56	14x14	F07	90	70	4-10	17	240	8-M20	45
DN200	240	173	22.1	60	17x17	F10	125	102	4-12	22	295	12-M20	30

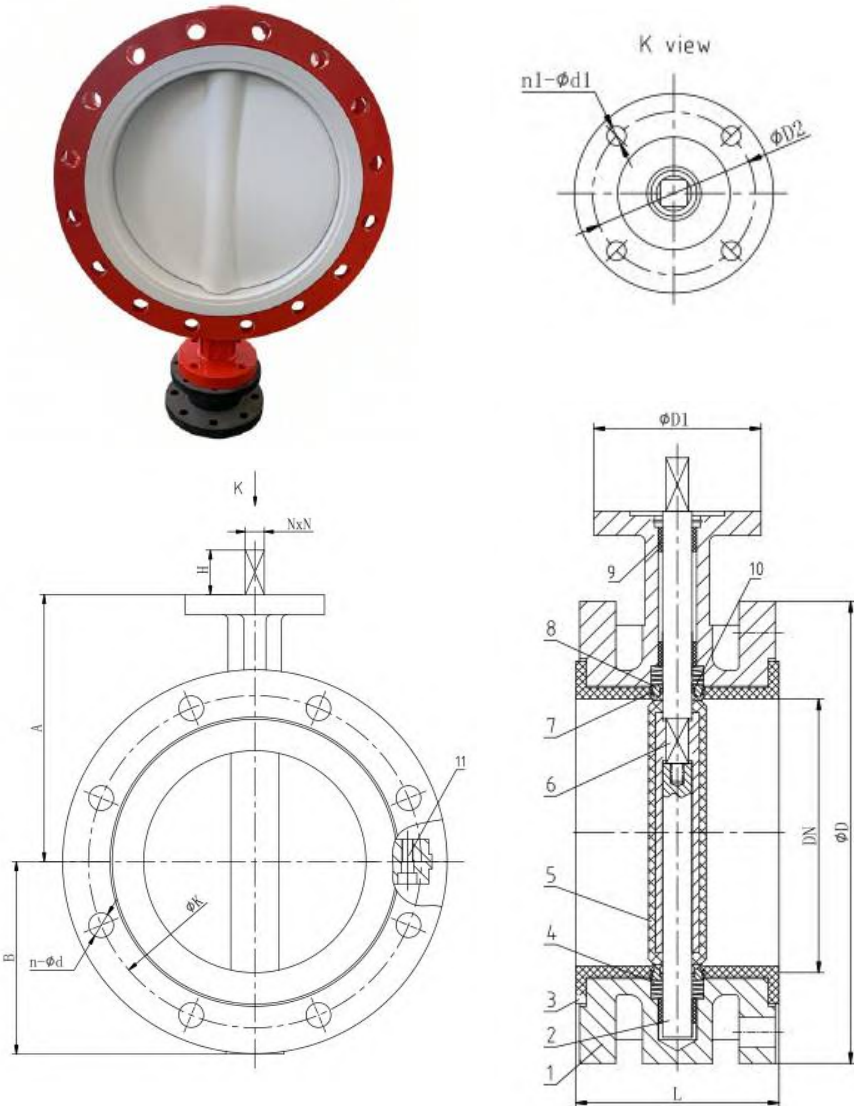
Other sizes to be provided as per requirements.

Technical Specification

Design standard: API609 /EN593
 Testing standard: API598 /EN12266-1
 Face to Face: API609 /EN558-1
 Flanges: EN 1092-2 PN10/16/JIS 10K/150LB
 Hydraulic test to ISO 5208
 Seat Test Pressure: 11bar, 17.6 bar
 Shell Test Pressure: 15bar, 24 bar
 Operating Torque Test

Materials Specification

No.	Name	Material
1	Body	CI/DI/CF8/CF8M
2	Lower shaft	SS410/420/431
3	Seat /liner	PTFE /PFA
4	Butterfly spring	Spring steel
5	Disc	CF3M/CF8M+PTFE
6	Upper shaft	SS304 /316 /410
7	Seat energizer	Silicone
8	Pressing Sleeve	Stainless steel
9	Bushing	PTFE /PFA
10	O ring	F-rubber
11	Bolt	SS304 /316



Main Dimensions

DN	L	D	K	n-d	A	B	N	H	D1	D2	n1-d1
DN50	108	165	125	4-19	140	75	9	14	90	70	4- 10
DN65	112	185	145	4-19	150	80	9	14	90	70	4- 10
DN80	114	200	160	8-19	160	90	9	14	90	70	4- 10
DN100	127	220	180	8-19	178	114	11	14	90	70	4- 10
DN125	140	250	210	8-19	190	130	14	17	90	70	4- 10
DN150	140	285	240	8-23	200	145	14	17	90	70	4- 10
DN200	152	340	295	12-23	240	175	17	22	125	102	4- 12
DN250	165	400	355	12-28	273	208	22	22	125	102	4- 12
DN300	178	455	410	12-28	310	244	22	22	125	102	4- 12
DN350	190	520	470	16-28	346	265	22	22	125	102	4- 12
DN400	216	580	525	16-31	375	292	27	36	175	140	4-18

Other sizes to be provided as per requirements.