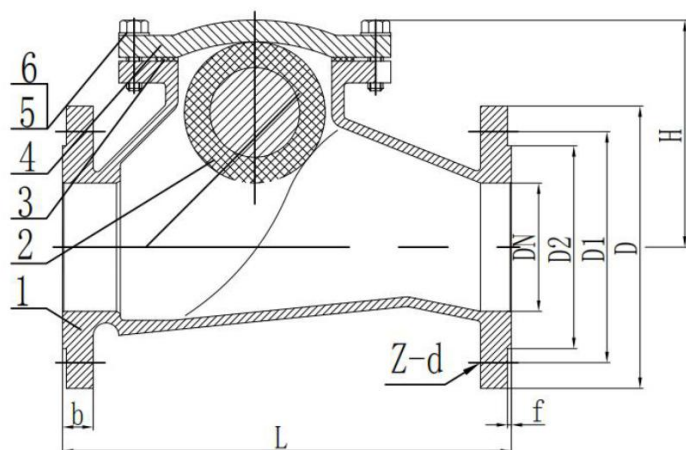


**PN10 PN16**
**Ball check valve**

**Technical Specification**

Design: API594, DIN3202, DN1074-3  
 Inspection & Test: API 598  
 Face to Face: API594, DIN3202, EN558-1  
 Flanges: EN 1092-2, DIN2532, PN10/16  
 Hydraulic test to ISO 5208  
 Seat Test Pressure: 11bar, 17.6 bar  
 Shell Test Pressure: 15bar, 24 bar  
 Operating Torque Test

**Materials Specification**

No.	Name	Material
1	Body	CI/DI/WCB
2	Ball float	CI/DI/WCB + NBR/EPDM/PTFE
3	Gasket	NBR/EPDM/PTFE
4	Bonnet	CI/DI/WCB
5	Bolt	A2/Stainless steel
6	Washer	WCB/Stainless steel

**Main Dimensions**

PN10	DN	D	D1	D2	L	b	H	f	Z-d
	50	160	125	99	215	14	115	3	4-19
	65	180	145	118	220	16.5	124	3	4-19
	80	195	160	132	255	16.5	138	3	8-19
	100	215	180	156	280	18	162	3	8-19
	125	245	210	184	320	18	198	3	8-19
	150	280	240	211	355	18	228	3	8-23
	200	335	295	266	430	20	298	3	8-23
	250	390	350	319	500	23.5	368	3	12-23
	300	440	400	370	550	25	438	4	12-23
PN16	50	160	125	99	215	14	115	3	4-19
	65	180	145	118	220	16.5	124	3	4-19
	80	195	160	132	255	16.5	138	3	8-19
	100	215	180	156	280	18	162	3	8-19
	125	245	210	184	320	18	198	3	8-19
	150	280	240	211	355	18	228	3	8-23
	200	335	295	266	430	20	298	3	12-23
	250	400	355	319	500	23.5	368	3	12-28
	300	455	410	370	550	25	438	4	12-28

Other sizes available as per requirements.